

2019-20 *The Pine Crest Fund:*
FUTURE READY







Dear Pine Crest School Community,

Our challenge as educators is to prepare our students to navigate and adapt to whatever comes their way by providing them with as many opportunities as possible to explore their interests, solve big problems, and design their own learning paths. We continually envision the tools, practices, and methodologies used to motivate our students and prepare them to be future ready.

I am grateful to each member of our extraordinary community who supports *The Pine Crest Fund*. Your philanthropic gifts advance innovative curriculum and programming, opportunities for creative problem-solving, outstanding faculty, flexible learning spaces, and more.

The future starts here!

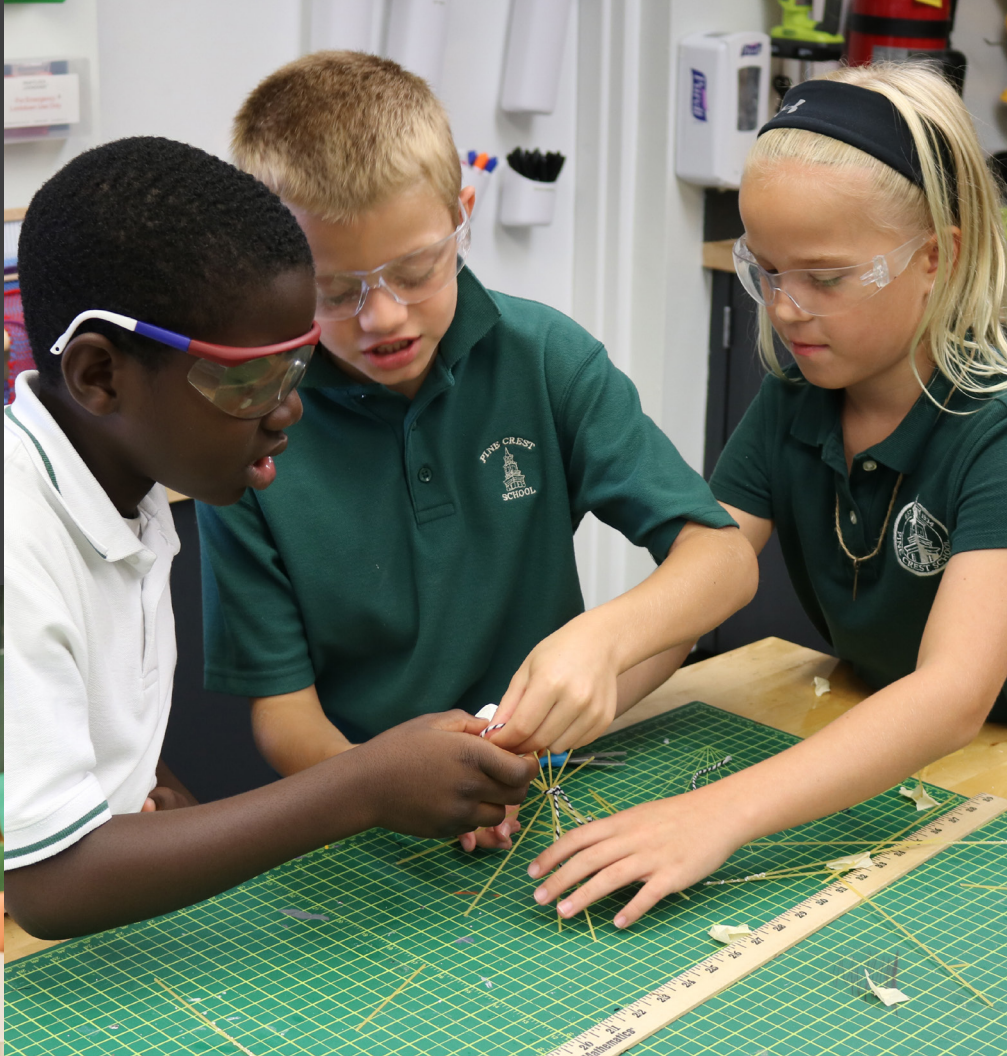
Dr. Dana Markham

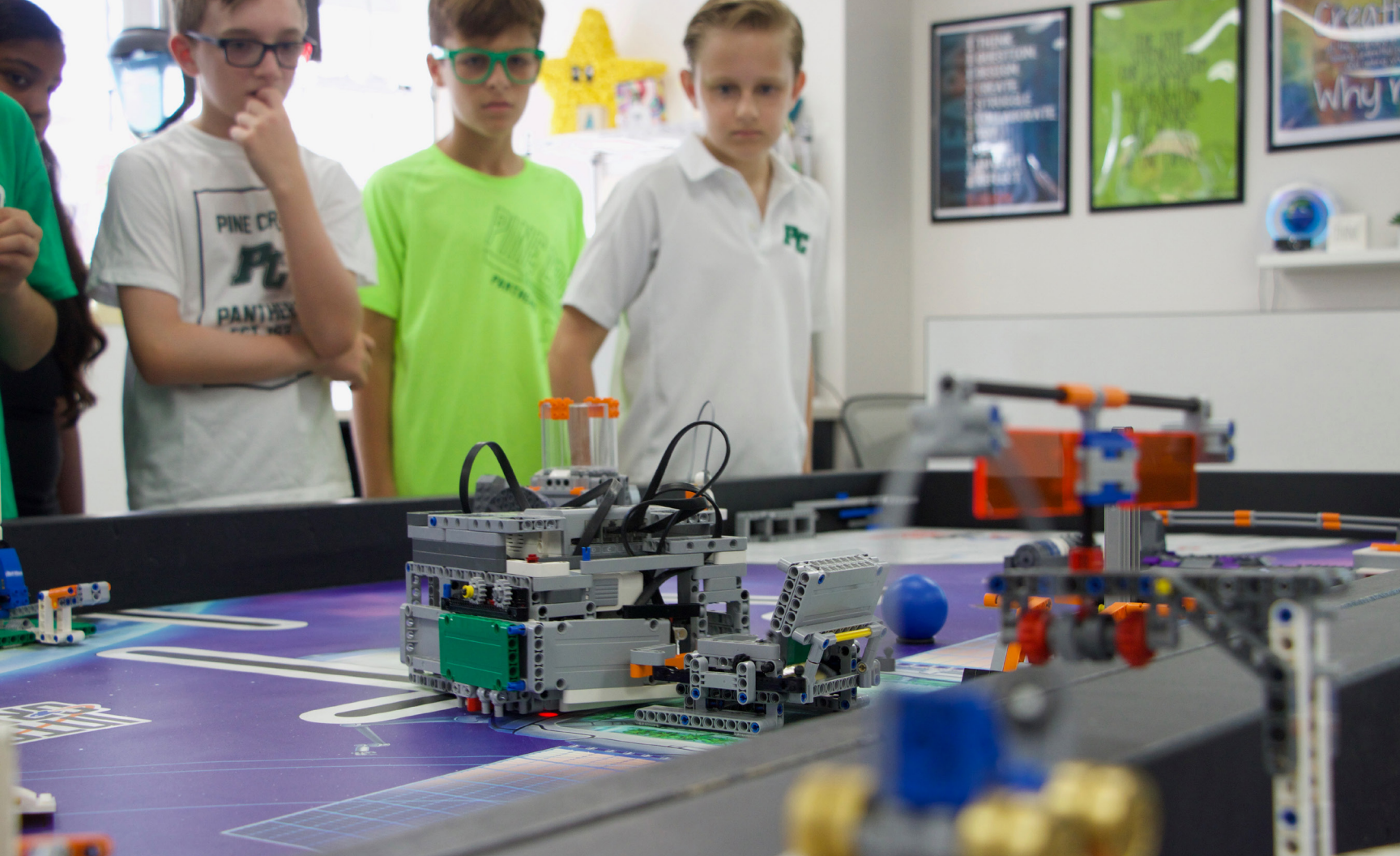
Dr. Dana Markham '18H
President

Our Mission

Every gift to *The Pine Crest Fund* advances our mission:

“To offer a challenging academic experience complemented by excellence in the arts and athletics; to develop the character, independence, and leadership of each student; and to provide a collaborative learning community that prepares students to meet the global challenges of our future.”



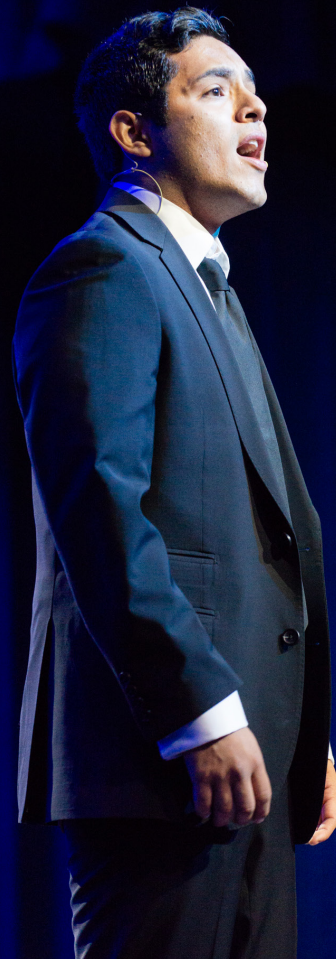


Tomorrow calls for a new set of skills and an increasingly more advanced type of teacher, student, and leader.

We surge forward as progressive independent school leaders, guided in our pursuits of learning by one essential question: **What do our students need to be successful in their new world?**

With an ever-evolving global landscape as their backdrop, Pine Crest students will be called upon to demonstrate high-brain, deep human interaction in all that they do.

Our students' and graduates' ability to exhibit adaptability, empathy, global understanding, and a collaborative mindset will distinguish them and pave the path for their personal success and professional fulfillment.





It is our goal to send Pine Crest graduates out into the world as emergent leaders who know their strengths and who have the courage to challenge norms, break barriers, and move forward with confidence.



IMPACT OF GIFTS

How do gifts to *The Pine Crest Fund* help to prepare our students to be future ready?

- Our teachers explore **emerging technologies** and integrate them into classroom instruction by participating in **professional development** opportunities.
- We continue to **create classrooms and spaces** that foster creativity and innovation, giving our students a myriad of opportunities to practice ethical thought leadership and to become curious, adaptable learners.
- One aspect of the preparation that we believe is fundamental to our students' success is building their social and emotional competencies in a **safe, secure, and inclusive learning environment**.
- We honor and celebrate a range of cultures, backgrounds, talents, experiences, and opinions in our students and foster **a community of inclusion and openness**.



FAMILY OF FUNDS

You may direct your *Pine Crest Fund* gift to an area of particular interest:

Schoolwide Priorities impact every aspect of our school with the flexibility to direct funds to immediate opportunities and priorities.

Faculty Enrichment advances faculty through professional development opportunities.

Financial Assistance ensures a vibrant and inclusive student body through financial aid and inclusion aid.

The Arts ignite creativity and passion through the visual and performing arts.

Athletics foster skills, teamwork, perseverance, and passion.



RECOGNITION SOCIETIES

You are encouraged to make a meaningful gift. You will be recognized at these levels for all giving made from July 1, 2019 to June 30, 2020:

President's Society

- McMillan Circle: \$50,000+
- Trustees' Circle: \$25,000 - \$49,999
- Pillars Circle: \$10,000 - \$24,999
- Cornerstone Circle: \$3,500 - \$9,999

Bell Tower Society

- The Crest Circle: \$1,500 - \$3,499
- Green and White Circle: \$500 - \$1,499
- Panther Circle: \$1 - \$499

1934 Society

- Members of the Pine Crest community who have included the school in their estate plan

Alumni Loyalty Society

- Alumni whose giving continues for three or more consecutive years





FOUR WAYS TO MAKE A GIFT OR PLEDGE

1. Online

www.pinecrest.edu/giveonline

2. Telephone

Contact Brandy Miller, Director of *The Pine Crest Fund*, at 561-852-2814 or brandy.miller@pinecrest.edu.

3. Mail

Include a check in the enclosed return envelope.

4. Transfer of Securities

Contact Alisa Karten, Director of Advancement, at 954-776-2177 or alisa.karten@pinecrest.edu.





The Pine Crest Fund: Future Ready
www.pinecrest.edu/impact